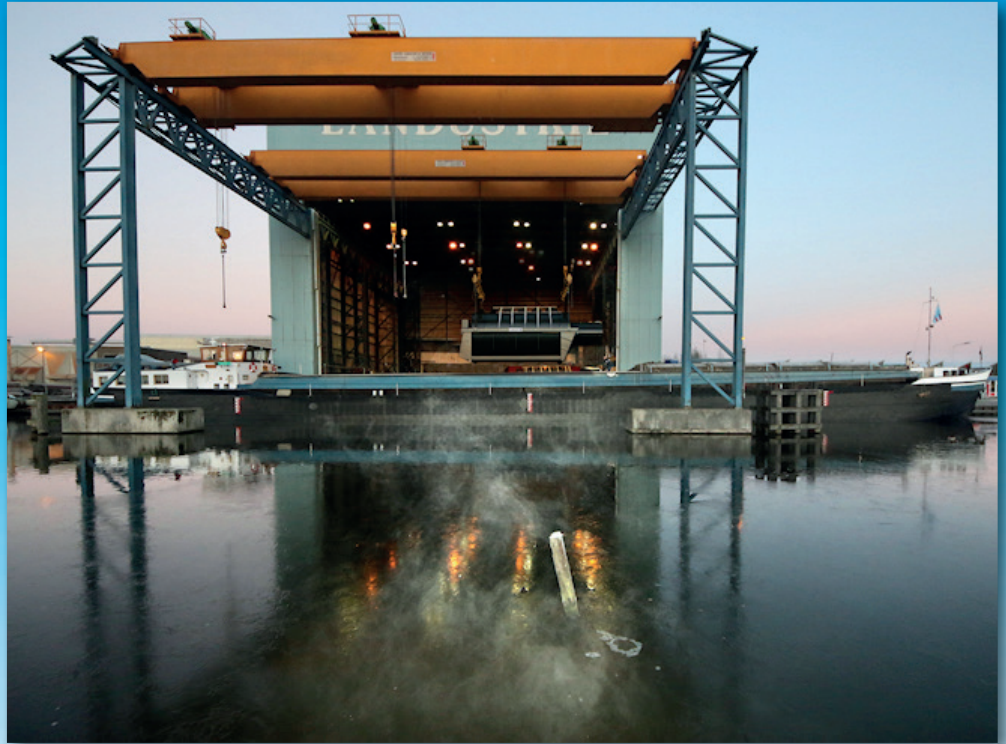
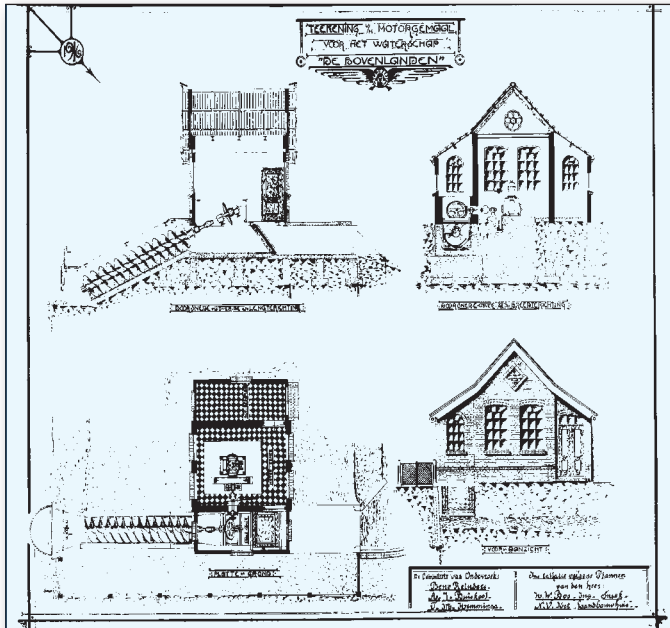


Company profile



Landustrie 
SINCE 1913

LANDUSTRIE



OVER 100 YEARS OF HISTORY

- ✦ In 2013 Landustrie celebrated its 100th anniversary.
- ✦ The foundations were laid around 1913, when the company was active in the agricultural sector and the evolving phases of polder drainage. By the 1950s Landustrie started with wastewater purification installations and ten years later the renown and respected LANDY product name became well-known abroad.
- ✦ Landustrie designs, produces and installs equipment for handling water and wastewater. All our LANDY products are made in our purpose built factory in Sneek, The Netherlands.
- ✦ Today Landustrie is a state-of-the-art manufacturing and engineering company, combining traditional proven products and techniques with high-tech innovations.

WATER TECHNOLOGY

Water is a vital source of life and exists all around us. Our activities and products revolve around it. We have the expertise and capabilities to provide solutions for every segment in the water chain. Our LANDY products are used for handling wastewater, surface water and for generating renewable energy (hydropower screws).

Landustrie has been active in the water technology sector for more than 100 years. Our strength lies not only in our extensive experience but also in the quality of our reliable products and our pragmatic attitude. We like to think along with our customers when it comes to finding the optimal solution of a problem or design and delivery of a project.

Despite Landustrie's rich history, we continue to focus on new technologies, innovate and develop our products. Sustainability is one of the important pillars in our product development process.



STP Saint Martin, Antilles Archipelago

SUSTAINABILITY

We believe it is important to take good care of our environment and to be responsible for our surroundings and all those involved. With this in mind, we strive to reduce our CO₂ emissions and carbon footprint. In May 2018, Landustrie obtained the Dutch CO₂ awareness certificate. Our management system for the CO₂ awareness of activities now complies with the requirements of level 3 of the handbook CO₂ Performance Ladder, version 3.0. Results are regularly released on our website.

INNOVATION

Accelerating water challenges means that besides good water quality, sustainable water use is of vital importance. Globally, water management plays a major role. We are confronted with rising sea levels and extreme weather resulting in flooding, and on the other hand, with growing fresh water shortage. Landustrie is motivated to contribute to the global water management by providing solutions. For instance, our Landy hydropower screw, a highly efficient, cost effective and environmentally friendly hydropower turbine system, is specifically designed to generate green energy.

In the field of aeration technology, we also provide environmentally friendly, sustainable and economically viable products. Landustrie helps you to achieve a truly sustainable process by combining many years of aeration engineering experience with professional project guidance throughout the entire process.

QUALITY ASSURANCE

All Landustrie products are manufactured according to the European guidelines. We are certified according to:

- ISO 9001
- EN 3834-2
- Contractors' Safety Checklist VCA**
- ATEX certificate for EC-Type examination
- Kiwa BRL-K14020/01 "Quality-controlled maintenance of pumps and pumping stations"

GLOBAL PLAYER

LANDY products are marketed worldwide and installed in all continents, in more than 70 different countries. An extensive network of agents and distributors is available for local service, advice and sales. Our own team of specialized technicians ensures that all LANDY products are assembled and put into operation on site. Supervision of a client's local team is also possible.

MANUFACTURING



Our factory in Sneek

To ensure the absolute highest quality product, we manufacture all of our LANDY products at our factory in Sneek, the Netherlands. At our 15.000 m² state-of-the-art manufacturing facility, we have all of the latest technology to manufacture and assemble products of various materials. Each step of the manufacturing process is performed under our roof and more importantly, under our quality control programs.

Our end products meet the standards set by Stoomwezen, Lloyd's Register, Germanischer Lloyd, DNV, ABS and WSA.



WASTEWATER

For the municipal and industrial market, Landustrie designs and supplies equipment that can be found in every phase of wastewater treatment process, from Archimedes screw pumps to screen cleaning equipment and aeration systems.

Landustrie has extensive knowledge and experience, and a strong track record in the field of wastewater treatment. This gives Landustrie the opportunity to design the most optimal aeration systems and to implement the most efficient aeration configuration.

We also recognize that innovation in wastewater technology is of utmost importance. Main issues are how to reduce energy consumption and contribute to a circular economy. This has led to new innovative sanitation solutions such as decentralized wastewater treatment, resulting in the regeneration of valuable material, and residues that are reused for energy production.



Full-scale aeration test basin at Sneek, the Netherlands

WATER CONTROL



Flood prevention pumping station Lingen, Germany

Optimal water management and control is crucial in our low-lying country. Landustrie is proud to play a part in water management solutions by supplying all kinds of equipment for (polder) pumping stations, weirs, locks and flood control for more than a century. This equipment includes LANDY weed screening units, Archimedes screw pumps and axial flow pumps.

In addition to mechanical engineering works, Landustrie is also capable of procuring electrical and civil works. In close consultation with the customer, a complete Design & Construct plan can be made, whereby Landustrie takes full responsibility for the design, implementation and maintenance.

We also focus on fish friendliness. Several fish-friendly pumping stations have been realised, enabling fish to migrate undisturbed and harm-free.

LANDY PUMPS

The philosophy behind the design of our wastewater pumps, both submersible and dry-installed, is quality, simplicity, durability, and low maintenance needs. Our goal is to maximise your investment returns with the minimum environmental impact, while providing a robust product that is tailored to your needs. These basics are what you will find in all products that are built and tested in our workshops in Sneek. Since wastewater can be contaminated with different materials and chemicals, Landustrie can supply the pumps in a wide variety of materials and with the necessary certifications. For you as our customer, Landustrie's goal is to fulfil your pump challenges in a satisfying way.

For selecting the most efficient pump we offer our LANDY-Sel pump selection program. Using a clear interface with basic questions the program guides you to the best selection. Pipework and friction loss calculations are also covered in the program along with the individual data sheets for all pumps.

Before shipment, all LANDY pumps are checked hydraulically in our own test facility, prior to shipping. A witnessed test certificate is available. All pumps are supplied with an unique serial number and test curve.



In-house pump assembly line

HYDROPOWER

Flowing water is a relentless, never ending source of power for pure, clean renewable energy. All you need to benefit from this natural resource is a LANDY hydropower screw system.

Landustrie designs, builds and installs highly efficient, cost effective and environmentally beneficial hydropower turbine system solutions, which are specifically designed for relatively low head, high flow river courses. Even in some situations where a combination of pump storage/ hydropower generation is possible, we are able to provide a LANDY Hydropower screw pump; the all in one machine!



Hydropower scheme Steinsau-Erstein, Alsace, France

AFTER SALES

Landustrie's after sales service is your connection to Landustrie, not only for spare parts but also for training, supervision of installation, commissioning or start-up.

We can restore the quality, performance and reliability of any installation, including those delivered by other manufacturers. This could also lead to a more cost and energy efficient installation than what was originally supplied. The refurbishment route always starts with an analysis, followed by either renovation or (a partially) renewal. The end result will be a high efficient unit, ready to serve you for the years to come!

For more information:
aftersales@landustrie.nl

LANDY EQUIPMENT

Landustrie produces a wide range of equipment for (waste) water treatment, which includes :

- ✚ Archimedes screw pumps
- ✚ Hydropower screws
- ✚ Surface aerators and brush aerators
- ✚ LANDOX flow boosters
- ✚ Screen cleaners
- ✚ Pumps
- ✚ Equipment for STP and decentralized sanitation
- ✚ After Sales

Landustrie Sneek BV

P.O. box 199 | 8600 AD SNEEK

The Netherlands

Tel. +31 515 48 68 88 | Fax +31 515 41 23 98

E-mail info@landustrie.nl | Internet www.landustrie.nl

Office address Pieter Zeemanstraat 6, Sneek