

Type: Submersible mixer  
 Application: Prevent the accumulation of solids and floating crusts.

**Mixer**

Effective area up to 6m  
 Impeller diameter 105mm  
 Electrical power in clean water 1.8 kW  
 Weight 43 kg

**Motor**

Mains: **60Hz** – 3 phase  
 Rated shaft power 1.75 kW  
 Rated electrical power 2.4 kW  
 Nominal speed 1700 rpm  
 Motor efficiency 71 %  
 Power factor (cos phi) 0.85  
 Degree of protection IP 68  
 Isolation class F (155°C)  
 Max. water temperature 40°C  
 Standard cable length 10 m

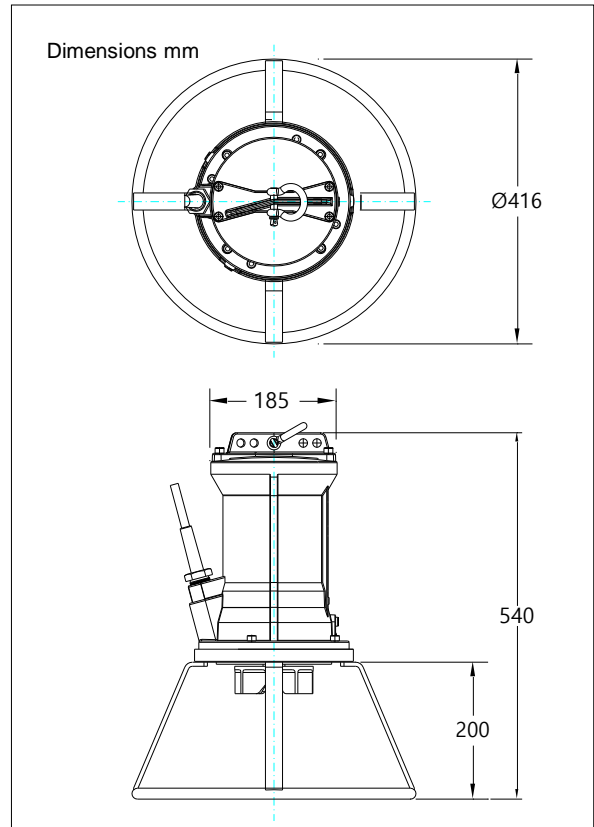


**Materials**

Impeller S.g cast iron EN-GJS-400-15  
 Motor unit parts Cast iron EN-GJL-250  
 Pump shaft AISI 431 (X20 CrNi 17 2)  
 Alt: AISI 316 (X5 CrNiMo 17 12 2)  
 Pump support Galvanized steel  
 Alt: RVS 316 (X5 CrNiMo 17 12 2)  
 Bolts AISI 316 (X5 CrNiMo 17 12 2)  
 Rubber parts Nitrile (NBR) or Neoprene (CR)  
 Alt: Viton (FPM)  
 Electrical cable Neoprene (CR)  
 Seal lubrication Oil  
 Seal pump side Silicon carbide – Silicon carbide  
 Seal motor side Carbon - Ceramic  
 Coating Two component polyurethane

**Optional**

- Flameproof version, to class: II 2 G Ex d IIB c T4  
 Standard: II 2 G Ex b c d IIB T4 Gb  
 With Frequency control: II 2 G Ex b c d IIB T3 Gb
- Thermo switches in motor windings (standard for flameproof version)
- Cable protection sheet (AISI316)
- Water detector in motor en oil chamber



**Connections**

voltage	current	electrical cable size		motor protection and/or water detector		flameproof version	
		direct start		direct start		direct start	
208	7.9	4G1.5		7G1.5		7G1.5	
230	7.2	4G1.5		7G1.5		7G1.5	
460	3.6	4G1.5		7G1.5		7G1.5	
575	2.9	4G1.5		7G1.5		7G1.5	
starting current DOL start : 4.8 x rated current							
							* other voltages on request

Type: Submersible mixer  
 Application: Prevent the accumulation of solids and floating crusts.

**Mixer**

Effective area up to 7.5m  
 Impeller diameter 115mm  
 Electrical power in clean water 3.1 kW  
 Weight 43 kg

**Motor**

Mains: **60Hz** – 3 phase  
 Rated shaft power 2.5 kW  
 Rated electrical power 3.6 kW  
 Nominal speed 1650 rpm  
 Motor efficiency 71 %  
 Power factor (cos phi) 0.89  
 Degree of protection IP 68  
 Isolation class F (155°C)  
 Max. water temperature 40°C  
 Standard cable length 10 m

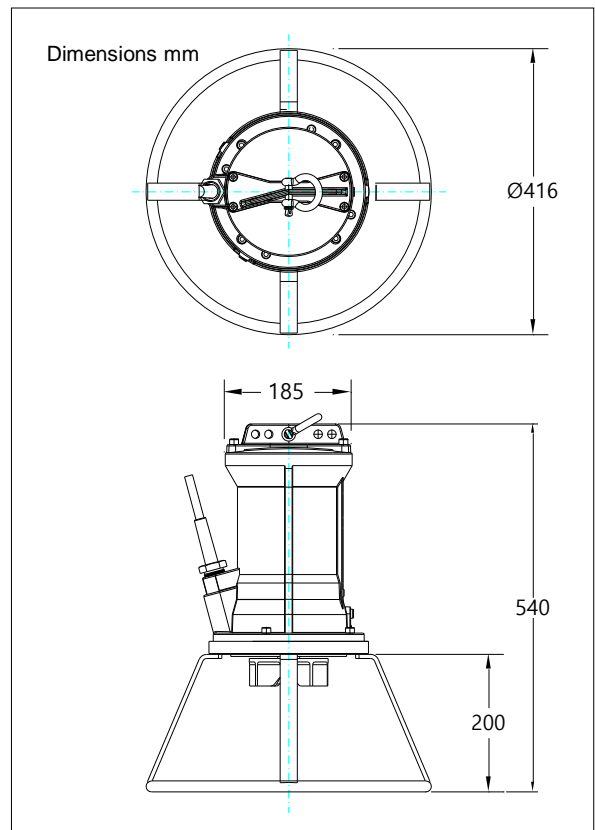


**Materials**

Impeller S.g cast iron EN-GJS-400-15  
 Motor unit parts Cast iron EN-GJL-250  
 Pump shaft AISI 431 (X20 CrNi 17 2)  
 Alt: AISI 316 (X5 CrNiMo 17 12 2)  
 Pump support Galvanized steel  
 Alt: RVS 316 (X5 CrNiMo 17 12 2)  
 Bolts AISI 316 (X5 CrNiMo 17 12 2)  
 Rubber parts Nitrile (NBR) or Neoprene (CR)  
 Alt: Viton (FPM)  
 Electrical cable Neoprene (CR)  
 Seal lubrication Oil  
 Seal pump side Silicon carbide – Silicon carbide  
 Seal motor side Carbon - Ceramic  
 Coating Two component polyurethane

**Optional**

- Flameproof version, to class: II 2 G Ex d IIB c T4  
 Standard: II 2 G Ex b c d IIB T4 Gb  
 With Frequency control: II 2 G Ex b c d IIB T3 Gb
- Thermo switches in motor windings  
 (standard for flameproof version)
- Cable protection sheet (AISI316)
- Water detector in motor en oil chamber



**Connections**

voltage	current	electrical cable size		motor protection and/or water detector		flameproof version	
		direct start	star-delta start	direct start	star-delta start	direct start	star-delta start
208	11.1	4G1.5	7G1.5	7G1.5	12G1.5	7G1.5	12G1.5
230	10.1	4G1.5	7G1.5	7G1.5	12G1.5	7G1.5	12G1.5
460	5.0	4G1.5	7G1.5	7G1.5	12G1.5	7G1.5	12G1.5
575	4.0	4G1.5	7G1.5	7G1.5	12G1.5	7G1.5	12G1.5
starting current DOL start : 3.4 x rated current							
starting current YD start : 1.1 x rated current						* other voltages on request	

Type: Submersible mixer  
 Application: Prevent the accumulation of solids and floating crusts.

**Mixer**

Effective area up to 10m  
 Impeller diameter 125mm  
 Electrical power in clean water 4.5 kW  
 Weight 46 kg

**Motor**

Mains: **60Hz** – 3 phase  
 Rated shaft power 4.0 kW  
 Rated electrical power 5.2 kW  
 Nominal speed 1660 rpm  
 Motor efficiency 77 %  
 Power factor (cos phi) 0.85  
 Degree of protection IP 68  
 Isolation class F (155°C)  
 Max. water temperature 40°C  
 Standard cable length 10 m

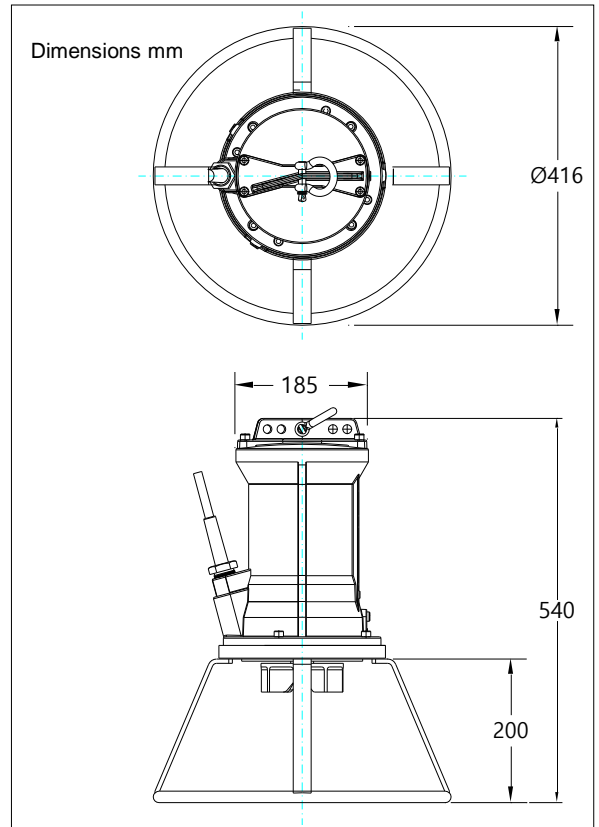


**Materials**

Impeller S.g cast iron EN-GJS-400-15  
 Motor unit parts Cast iron EN-GJL-250  
 Pump shaft AISI 431 (X20 CrNi 17 2)  
 Alt: AISI 316 (X5 CrNiMo 17 12 2)  
 Pump support Galvanized steel  
 Alt: RVS 316 (X5 CrNiMo 17 12 2)  
 Bolts AISI 316 (X5 CrNiMo 17 12 2)  
 Rubber parts Nitrile (NBR) or Neoprene (CR)  
 Alt: Viton (FPM)  
 Electrical cable Neoprene (CR)  
 Seal lubrication Oil  
 Seal pump side Silicon carbide – Silicon carbide  
 Seal motor side Carbon - Ceramic  
 Coating Two component polyurethane

**Optional**

- Flameproof version, to class: II 2 G Ex d IIB c T4  
 Standard: II 2 G Ex b c d IIB T4 Gb  
 With Frequency control: II 2 G Ex b c d IIB T3 Gb
- Thermo switches in motor windings (standard for flameproof version)
- Cable protection sheet (AISI316)
- Water detector in motor en oil chamber



**Connections**

voltage	current	electrical cable size		motor protection and/or water detector		flameproof version	
		direct start		direct start		direct start	
208	17.1	4G2.5	7G1.5	7G2.5	12G1.5	7G2.5	12G1.5
230	15.4	4G2.5	7G1.5	7G2.5	12G1.5	7G2.5	12G1.5
460	7.7	4G1.5	7G1.5	7G1.5	12G1.5	7G1.5	12G1.5
575	6.2	4G1.5	7G1.5	7G1.5	12G1.5	7G1.5	12G1.5
starting current DOL start : 4.3 x rated current							
starting current YD start : 1.4 x rated current						* other voltages on request	

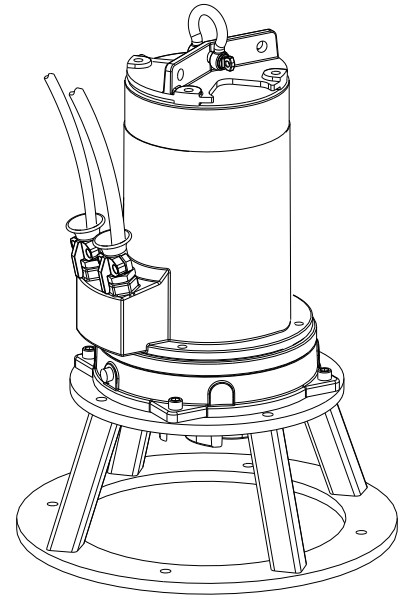
Type: Submersible mixer  
 Application: Prevent the accumulation of solids and floating crusts.

**Mixer**

Effective area up to 14m  
 Impeller diameter 135mm  
 Electrical power in clean water 8.1 kW  
 Weight 85 kg

**Motor**

Mains: **60Hz** – 3 phase  
 Rated shaft power 6.9 kW  
 Rated electrical power 8.8 kW  
 Nominal speed 1674 rpm  
 Motor efficiency 78 %  
 Power factor (cos phi) 0.85  
 Degree of protection IP 68  
 Isolation class F (155°C)  
 Max. water temperature 40°C  
 Standard cable length 10 m

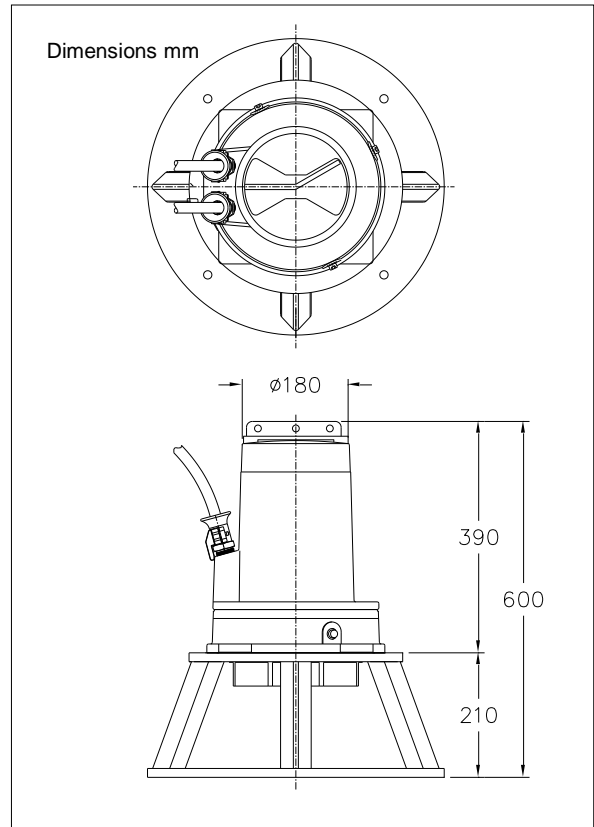


**Materials**

Impeller S.g cast iron EN-GJS-400-15  
 Motor unit parts Cast iron EN-GJL-250  
 Pump shaft AISI 431 (X20 CrNi 17 2)  
 Alt: AISI 316 (X5 CrNiMo 17 12 2)  
 Pump support Galvanized steel  
 Alt: RVS 316 (X5 CrNiMo 17 12 2)  
 Bolts AISI 316 (X5 CrNiMo 17 12 2)  
 Rubber parts Nitrile (NBR) or Neoprene (CR)  
 Alt: Viton (FPM)  
 Electrical cable Neoprene (CR)  
 Seal lubrication Oil  
 Seal pump side Silicon carbide – Silicon carbide  
 Seal motor side Carbon - Ceramic  
 Coating Two component polyurethane

**Optional**

- Flameproof version, to class: II 2 G Ex d IIB c T4  
 Standard: II 2 G Ex b c d IIB T4 Gb  
 With Frequency control: II 2 G Ex b c d IIB T3 Gb
- Thermo switches in motor windings (standard for flameproof version)
- Cable protection sheet (AISI316)
- Water detector in motor en oil chamber



**Connections**

voltage	current	electrical cable size		motor protection and/or water detector		flameproof version	
		direct start	star-delta start	direct start	star-delta start	direct start	star-delta start
208	28.9	4G6	7G1.5	4G6 + 4G1.5	12G1.5	4G6 + 4G2.5	12G1.5
230	26.1	4G6	7G1.5	4G6 + 4G1.5	12G1.5	4G6 + 4G2.5	12G1.5
460	13.1	4G2.5	7G1.5	7G1.5	12G1.5	7G1.5	12G1.5
575	10.5	4G2.5	7G1.5	7G1.5	12G1.5	7G1.5	12G1.5
starting current DOL start : 4.2 x rated current							
starting current YD start : 1.5 x rated current				* other voltages on request			

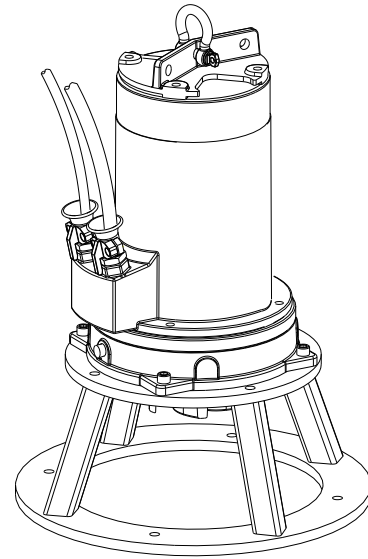
Type: Submersible mixer  
 Application: Prevent the accumulation of solids and floating crusts.

**Mixer**

Effective area up to 16m  
 Impeller diameter 140mm  
 Electrical power in clean water 9.9 kW  
 Weight 87 kg

**Motor**

Mains: **60Hz** – 3 phase  
 Rated shaft power 8.6 kW  
 Rated electrical power 10.6 kW  
 Nominal speed 1668 rpm  
 Motor efficiency 81 %  
 Power factor (cos phi) 0.87  
 Degree of protection IP 68  
 Isolation class F (155°C)  
 Max. water temperature 40°C  
 Standard cable length 10 m

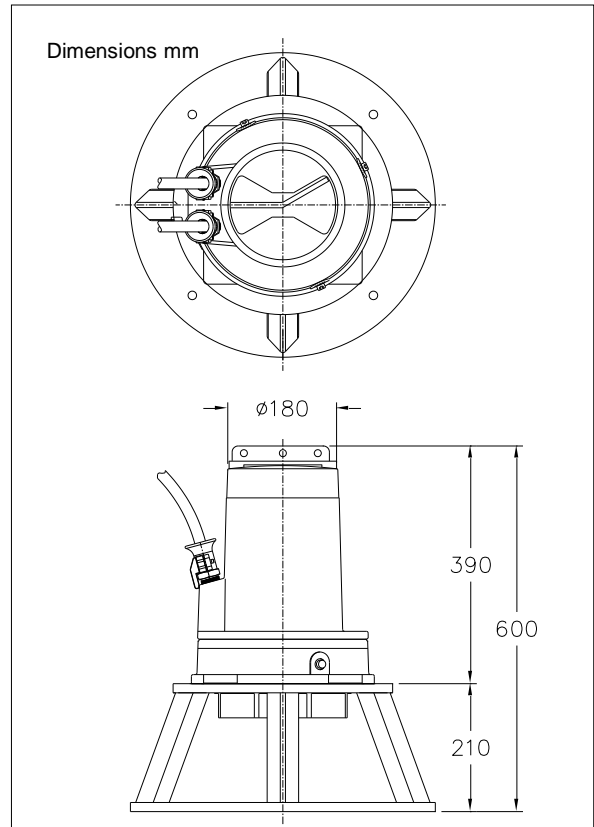


**Materials**

Impeller S.g cast iron EN-GJS-400-15  
 Motor unit parts Cast iron EN-GJL-250  
 Pump shaft AISI 431 (X20 CrNi 17 2)  
 Alt: AISI 316 (X5 CrNiMo 17 12 2)  
 Pump support Galvanized steel  
 Alt: RVS 316 (X5 CrNiMo 17 12 2)  
 Bolts AISI 316 (X5 CrNiMo 17 12 2)  
 Rubber parts Nitrile (NBR) or Neoprene (CR)  
 Alt: Viton (FPM)  
 Electrical cable Neoprene (CR)  
 Seal lubrication Oil  
 Seal pump side Silicon carbide – Silicon carbide  
 Seal motor side Carbon - Ceramic  
 Coating Two component polyurethane

**Optional**

- Flameproof version, to class: II 2 G Ex d IIB c T4  
 Standard: II 2 G Ex b c d IIB T4 Gb  
 With Frequency control: II 2 G Ex b c d IIB T3 Gb
- Thermo switches in motor windings  
 (standard for flameproof version)
- Cable protection sheet (AISI316)
- Water detector in motor en oil chamber



**Connections**

voltage	current	electrical cable size		motor protection and/or water detector		flameproof version	
		direct start	star-delta start	direct start	star-delta start	direct start	star-delta start
[V]*	[A]						
208	34.0	4G6	7G2.5	4G6 + 4G1.5	7G2.5 + 4G1.5	4G6 + 4G2.5	7G2.5 + 4G2.5
230	30.7	4G6	7G2.5	4G6 + 4G1.5	7G2.5 + 4G1.5	4G6 + 4G2.5	7G2.5 + 4G2.5
460	15.4	4G2.5	7G1.5	7G1.5	12G1.5	7G1.5	12G1.5
575	12.3	4G2.5	7G1.5	7G1.5	12G1.5	7G1.5	12G1.5
starting current DOL start : 6.1 x rated current							
starting current YD start : 2.0 x rated current						* other voltages on request	

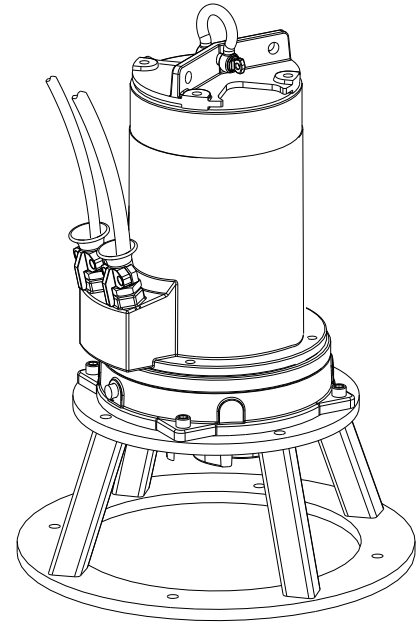
Type: Submersible mixer  
 Application: Prevent the accumulation of solids and floating crusts.

**Mixer**

Effective area up to 18m  
 Impeller diameter 155mm  
 Electrical power in clean water 15.5 kW  
 Weight 102 kg

**Motor**

Mains: **60Hz** – 3 phase  
 Rated shaft power 14.9 kW  
 Rated electrical power 17.5 kW  
 Nominal speed 1704 rpm  
 Motor efficiency 85 %  
 Power factor (cos phi) 0.84  
 Degree of protection IP 68  
 Isolation class F (155°C)  
 Max. water temperature 40°C  
 Standard cable length 10 m

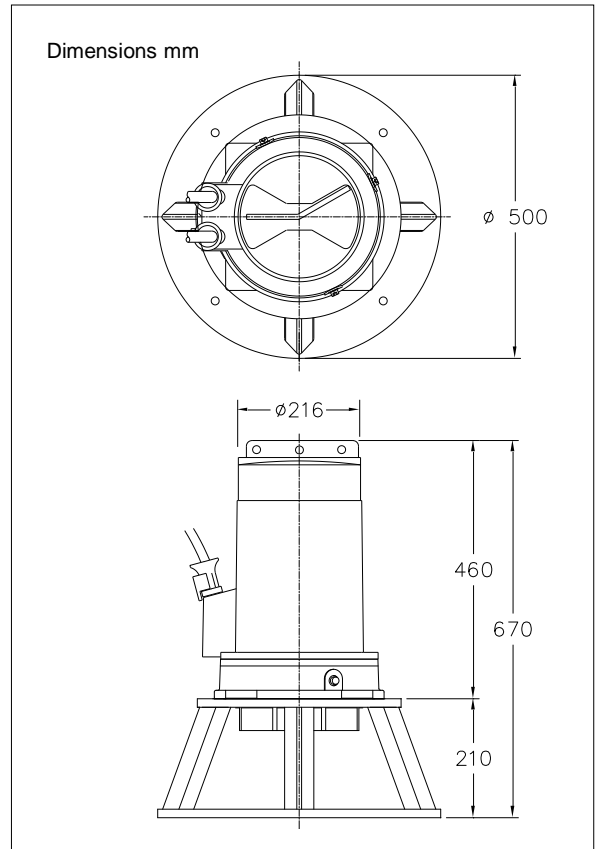


**Materials**

Impeller S.g cast iron EN-GJS-400-15  
 Motor unit parts Cast iron EN-GJL-250  
 Pump shaft AISI 431 (X20 CrNi 17 2)  
 Alt: AISI 316 (X5 CrNiMo 17 12 2)  
 Pump support Galvanized steel  
 Alt: RVS 316 (X5 CrNiMo 17 12 2)  
 Bolts AISI 316 (X5 CrNiMo 17 12 2)  
 Rubber parts Nitrile (NBR) or Neoprene (CR)  
 Alt: Viton (FPM)  
 Electrical cable Neoprene (CR)  
 Seal lubrication Oil  
 Seal pump side Silicon carbide – Silicon carbide  
 Seal motor side Carbon - Ceramic  
 Coating Two component polyurethane

**Optional**

- Flameproof version, to class: II 2 G Ex d IIB c T4  
 Standard: II 2 G Ex b c d IIB T4 Gb  
 With Frequency control: II 2 G Ex b c d IIB T3 Gb
- Thermo switches in motor windings (standard for flameproof version)
- Cable protection sheet (AISI316)
- Water detector in motor en oil chamber



**Connections**

		electrical cable size		motor protection and/or water detector		flameproof version	
voltage	current	direct start	star-delta start	direct start	star-delta start	direct start	star-delta start
[V]*	[A]						
208	58.1	2x 4G6	2x 4G6	-	-	-	-
230	52.6	2x 4G6	2x 4G6	-	-	-	-
460	26.3	4G6	7G2.5	4G6 + 4G1.5	7G2.5 + 4G1.5	4G6 + 4G2.5	7G2.5 + 4G2.5
575	21.0	4G2.5	7G1.5	7G2.5	12G1.5	7G2.5	12G1.5
starting current DOL start : 5.0 x rated current							
starting current YD start : 1.7 x rated current				* other voltages on request			

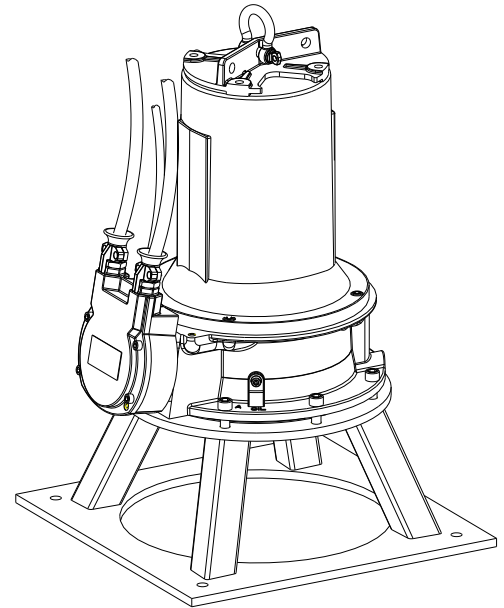
Type: Submersible mixer  
 Application: Prevent the accumulation of solids and floating crusts.

**Mixer**

Effective area up to 20m  
 Impeller diameter 176mm  
 Electrical power in clean water 27.5 kW  
 Weight 200 kg

**Motor**

Mains: **60Hz** – 3 phase  
 Rated shaft power 25.3 kW  
 Rated electrical power 30.1 kW  
 Nominal speed 1720 rpm  
 Motor efficiency 84 %  
 Power factor (cos phi) 0.82  
 Degree of protection IP 68  
 Isolation class F (155°C)  
 Max. water temperature 40°C  
 Standard cable length 10 m

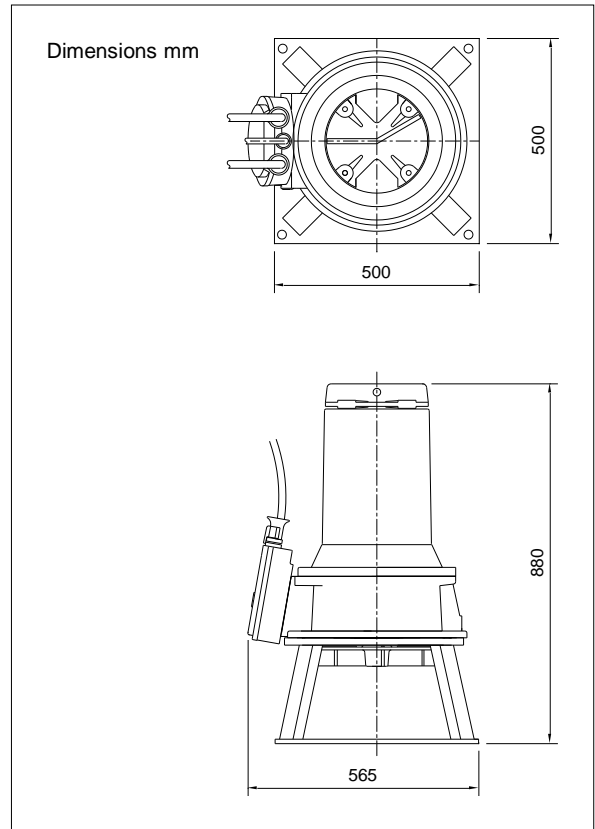


**Materials**

Impeller S.g cast iron EN-GJS-400-15  
 Motor unit parts Cast iron EN-GJL-250  
 Pump shaft AISI 431 (X20 CrNi 17 2)  
 Alt: AISI 316 (X5 CrNiMo 17 12 2)  
 Pump support Galvanized steel  
 Alt: RVS 316 (X5 CrNiMo 17 12 2)  
 Bolts AISI 316 (X5 CrNiMo 17 12 2)  
 Rubber parts Nitrile (NBR) or Neoprene (CR)  
 Alt: Viton (FPM)  
 Electrical cable Neoprene (CR)  
 Seal lubrication Oil  
 Seal pump side Silicon carbide – Silicon carbide  
 Seal motor side Carbon - ceramic  
 Coating Two component polyurethane

**Optional**

- Flameproof version, to class: II 2 G Ex d IIB c T4  
 Standard: II 2 G Ex b c d IIB T4 Gb  
 With Frequency control: II 2 G Ex b c d IIB T3 Gb
- Cable protection sheet (AISI316)
- Water detector in motor en oil chamber



**Connections**

voltage	current	electrical cable size			
		direct start	star-delta start	flameproof version direct start	flameproof version star-delta start
230	92.2	2x 4G10 + 4G2.5	2x4G16 + 4G2.5	2x 4G10 + 4G2.5	2x4G16 + 4G2.5
380	55.8	2x 4G10 + 4G2.5	2x4G16 + 4G2.5	2x 4G10 + 4G2.5	2x4G16 + 4G2.5
460	46.1	4G10 + 4G2.5	2x 4G6 + 4G2.5	4G10 + 4G2.5	2x 4G6 + 4G2.5
575	36.9	4G10 + 4G2.5	7G2.5 + 4G2.5	4G10 + 4G2.5	7G2.5 + 4G2.5
starting current DOL start : 5.7 x rated current					
starting current YD start : 1.9 x rated current					
* other voltages on request					