

Type: Submersible mixer
 Application: Prevent the accumulation of solids and floating crusts.

Mixer

Effective area up to 6m
 Impeller diameter 105mm
 Electrical power in clean water 1.8 kW
 Weight 43 kg

Motor

Mains: **60Hz** – 3 phase
 Rated shaft power 1.75 kW
 Rated electrical power 2.4 kW
 Nominal speed 1700 rpm
 Motor efficiency 71 %
 Power factor (cos phi) 0.85
 Degree of protection IP 68
 Isolation class F (155°C)
 Max. water temperature 40°C
 Standard cable length 10 m

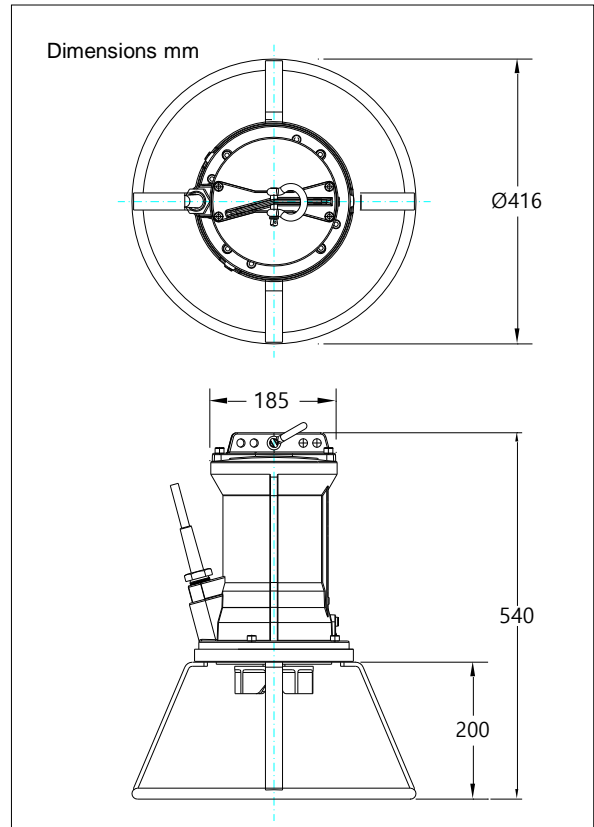


Materials

Impeller S.g cast iron EN-GJS-400-15
 Motor unit parts Cast iron EN-GJL-250
 Pump shaft AISI 431 (X20 CrNi 17 2)
 Alt: AISI 316 (X5 CrNiMo 17 12 2)
 Pump support Galvanized steel
 Alt: RVS 316 (X5 CrNiMo 17 12 2)
 Bolts AISI 316 (X5 CrNiMo 17 12 2)
 Rubber parts Nitrile (NBR) or Neoprene (CR)
 Alt: Viton (FPM)
 Electrical cable Neoprene (CR)
 Seal lubrication Oil
 Seal pump side Silicon carbide – Silicon carbide
 Seal motor side Carbon - Ceramic
 Coating Two component polyurethane

Optional

- Flameproof version, to class: II 2 G Ex d IIB c T4
 Standard: II 2 G Ex b c d IIB T4 Gb
 With Frequency control: II 2 G Ex b c d IIB T3 Gb
- Thermo switches in motor windings (standard for flameproof version)
- Cable protection sheet (AISI316)
- Water detector in motor en oil chamber



Connections

voltage	current	electrical cable size		motor protection and/or water detector		flameproof version	
		direct start		direct start		direct start	
208	7.9	4G1.5		7G1.5		7G1.5	
230	7.2	4G1.5		7G1.5		7G1.5	
460	3.6	4G1.5		7G1.5		7G1.5	
575	2.9	4G1.5		7G1.5		7G1.5	
starting current DOL start : 4.8 x rated current							
							* other voltages on request

Type: Submersible mixer
 Application: Prevent the accumulation of solids and floating crusts.

Mixer

Effective area up to 7.5m
 Impeller diameter 115mm
 Electrical power in clean water 3.1 kW
 Weight 43 kg

Motor

Mains: **60Hz** – 3 phase
 Rated shaft power 2.5 kW
 Rated electrical power 3.6 kW
 Nominal speed 1650 rpm
 Motor efficiency 71 %
 Power factor (cos phi) 0.89
 Degree of protection IP 68
 Isolation class F (155°C)
 Max. water temperature 40°C
 Standard cable length 10 m

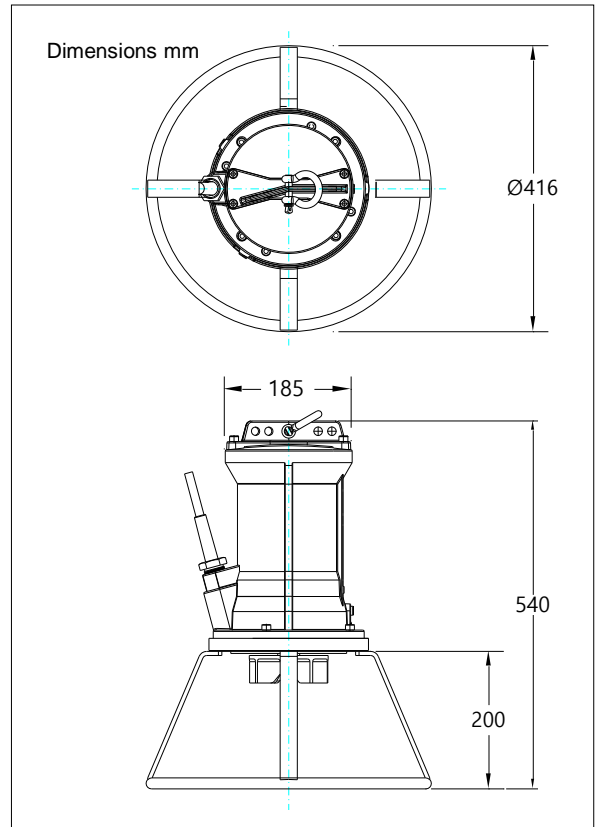


Materials

Impeller S.g cast iron EN-GJS-400-15
 Motor unit parts Cast iron EN-GJL-250
 Pump shaft AISI 431 (X20 CrNi 17 2)
 Alt: AISI 316 (X5 CrNiMo 17 12 2)
 Pump support Galvanized steel
 Alt: RVS 316 (X5 CrNiMo 17 12 2)
 Bolts AISI 316 (X5 CrNiMo 17 12 2)
 Rubber parts Nitrile (NBR) or Neoprene (CR)
 Alt: Viton (FPM)
 Electrical cable Neoprene (CR)
 Seal lubrication Oil
 Seal pump side Silicon carbide – Silicon carbide
 Seal motor side Carbon - Ceramic
 Coating Two component polyurethane

Optional

- Flameproof version, to class: II 2 G Ex d IIB c T4
 Standard: II 2 G Ex b c d IIB T4 Gb
 With Frequency control: II 2 G Ex b c d IIB T3 Gb
- Thermo switches in motor windings
 (standard for flameproof version)
- Cable protection sheet (AISI316)
- Water detector in motor en oil chamber



Connections

voltage	current	electrical cable size		motor protection and/or water detector		flameproof version	
		direct start	star-delta start	direct start	star-delta start	direct start	star-delta start
208	11.1	4G1.5	7G1.5	7G1.5	12G1.5	7G1.5	12G1.5
230	10.1	4G1.5	7G1.5	7G1.5	12G1.5	7G1.5	12G1.5
460	5.0	4G1.5	7G1.5	7G1.5	12G1.5	7G1.5	12G1.5
575	4.0	4G1.5	7G1.5	7G1.5	12G1.5	7G1.5	12G1.5
starting current DOL start : 3.4 x rated current							
starting current YD start : 1.1 x rated current						* other voltages on request	

Type: Submersible mixer
 Application: Prevent the accumulation of solids and floating crusts.

Mixer

Effective area up to 10m
 Impeller diameter 125mm
 Electrical power in clean water 4.5 kW
 Weight 46 kg

Motor

Mains: **60Hz** – 3 phase
 Rated shaft power 4.0 kW
 Rated electrical power 5.2 kW
 Nominal speed 1660 rpm
 Motor efficiency 77 %
 Power factor (cos phi) 0.85
 Degree of protection IP 68
 Isolation class F (155°C)
 Max. water temperature 40°C
 Standard cable length 10 m

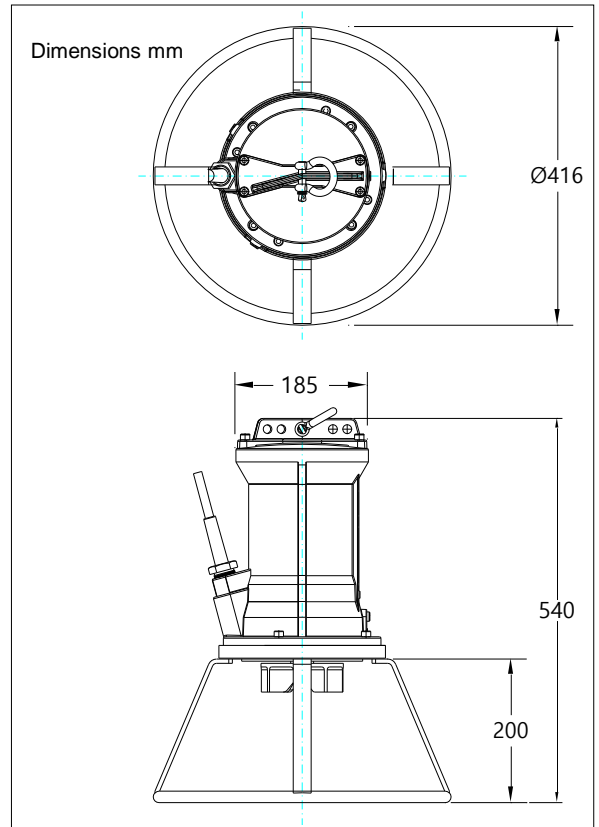


Materials

Impeller S.g cast iron EN-GJS-400-15
 Motor unit parts Cast iron EN-GJL-250
 Pump shaft AISI 431 (X20 CrNi 17 2)
 Alt: AISI 316 (X5 CrNiMo 17 12 2)
 Pump support Galvanized steel
 Alt: RVS 316 (X5 CrNiMo 17 12 2)
 Bolts AISI 316 (X5 CrNiMo 17 12 2)
 Rubber parts Nitrile (NBR) or Neoprene (CR)
 Alt: Viton (FPM)
 Electrical cable Neoprene (CR)
 Seal lubrication Oil
 Seal pump side Silicon carbide – Silicon carbide
 Seal motor side Carbon - Ceramic
 Coating Two component polyurethane

Optional

- Flameproof version, to class: II 2 G Ex d IIB c T4
 Standard: II 2 G Ex b c d IIB T4 Gb
 With Frequency control: II 2 G Ex b c d IIB T3 Gb
- Thermo switches in motor windings
 (standard for flameproof version)
- Cable protection sheet (AISI316)
- Water detector in motor en oil chamber



Connections

voltage	current	electrical cable size		motor protection and/or water detector		flameproof version	
		direct start		direct start		direct start	
208	17.1	4G2.5	7G1.5	7G2.5	12G1.5	7G2.5	12G1.5
230	15.4	4G2.5	7G1.5	7G2.5	12G1.5	7G2.5	12G1.5
460	7.7	4G1.5	7G1.5	7G1.5	12G1.5	7G1.5	12G1.5
575	6.2	4G1.5	7G1.5	7G1.5	12G1.5	7G1.5	12G1.5
starting current DOL start : 4.3 x rated current							
starting current YD start : 1.4 x rated current						* other voltages on request	

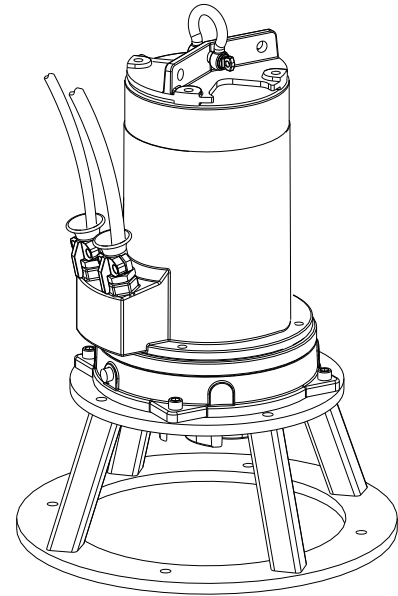
Type: Submersible mixer
 Application: Prevent the accumulation of solids and floating crusts.

Mixer

Effective area up to 14m
 Impeller diameter 135mm
 Electrical power in clean water 8.1 kW
 Weight 85 kg

Motor

Mains: **60Hz** – 3 phase
 Rated shaft power 6.9 kW
 Rated electrical power 8.8 kW
 Nominal speed 1674 rpm
 Motor efficiency 78 %
 Power factor (cos phi) 0.85
 Degree of protection IP 68
 Isolation class F (155°C)
 Max. water temperature 40°C
 Standard cable length 10 m

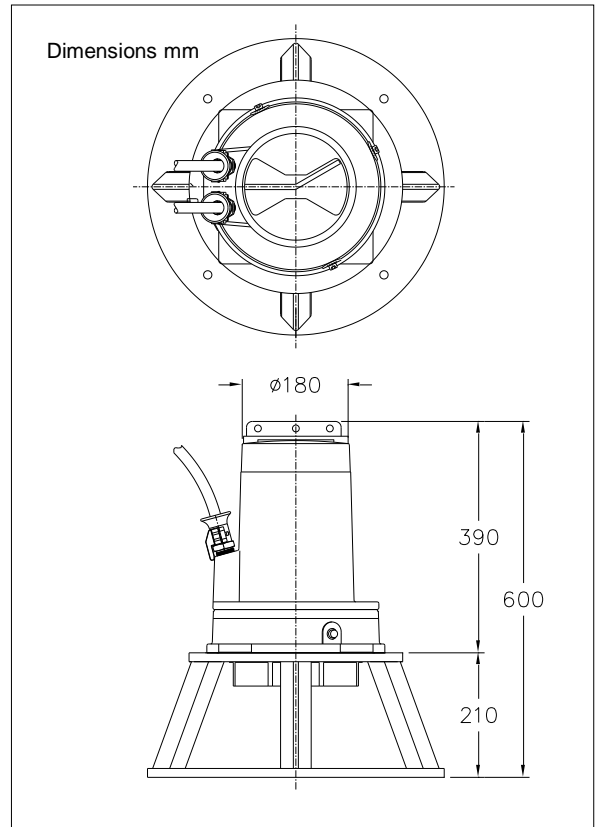


Materials

Impeller S.g cast iron EN-GJS-400-15
 Motor unit parts Cast iron EN-GJL-250
 Pump shaft AISI 431 (X20 CrNi 17 2)
 Alt: AISI 316 (X5 CrNiMo 17 12 2)
 Pump support Galvanized steel
 Alt: RVS 316 (X5 CrNiMo 17 12 2)
 Bolts AISI 316 (X5 CrNiMo 17 12 2)
 Rubber parts Nitrile (NBR) or Neoprene (CR)
 Alt: Viton (FPM)
 Electrical cable Neoprene (CR)
 Seal lubrication Oil
 Seal pump side Silicon carbide – Silicon carbide
 Seal motor side Carbon - Ceramic
 Coating Two component polyurethane

Optional

- Flameproof version, to class: II 2 G Ex d IIB c T4
 Standard: II 2 G Ex b c d IIB T4 Gb
 With Frequency control: II 2 G Ex b c d IIB T3 Gb
- Thermo switches in motor windings
 (standard for flameproof version)
- Cable protection sheet (AISI316)
- Water detector in motor en oil chamber



Connections

voltage	current	electrical cable size		motor protection and/or water detector		flameproof version	
		direct start	star-delta start	direct start	star-delta start	direct start	star-delta start
208	28.9	4G6	7G1.5	4G6 + 4G1.5	12G1.5	4G6 + 4G2.5	12G1.5
230	26.1	4G6	7G1.5	4G6 + 4G1.5	12G1.5	4G6 + 4G2.5	12G1.5
460	13.1	4G2.5	7G1.5	7G1.5	12G1.5	7G1.5	12G1.5
575	10.5	4G2.5	7G1.5	7G1.5	12G1.5	7G1.5	12G1.5
starting current DOL start : 4.2 x rated current							
starting current YD start : 1.5 x rated current				* other voltages on request			

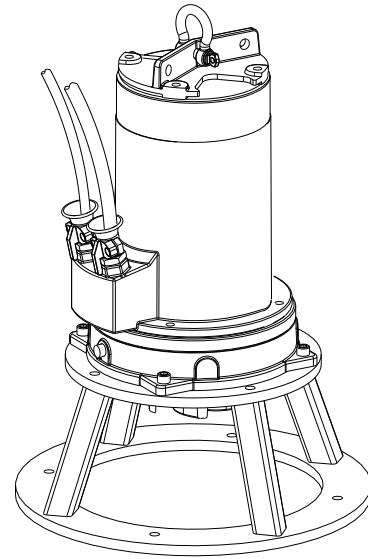
Type: Submersible mixer
 Application: Prevent the accumulation of solids and floating crusts.

Mixer

Effective area up to 16m
 Impeller diameter 140mm
 Electrical power in clean water 9.9 kW
 Weight 87 kg

Motor

Mains: **60Hz** – 3 phase
 Rated shaft power 8.6 kW
 Rated electrical power 10.6 kW
 Nominal speed 1668 rpm
 Motor efficiency 81 %
 Power factor (cos phi) 0.87
 Degree of protection IP 68
 Isolation class F (155°C)
 Max. water temperature 40°C
 Standard cable length 10 m

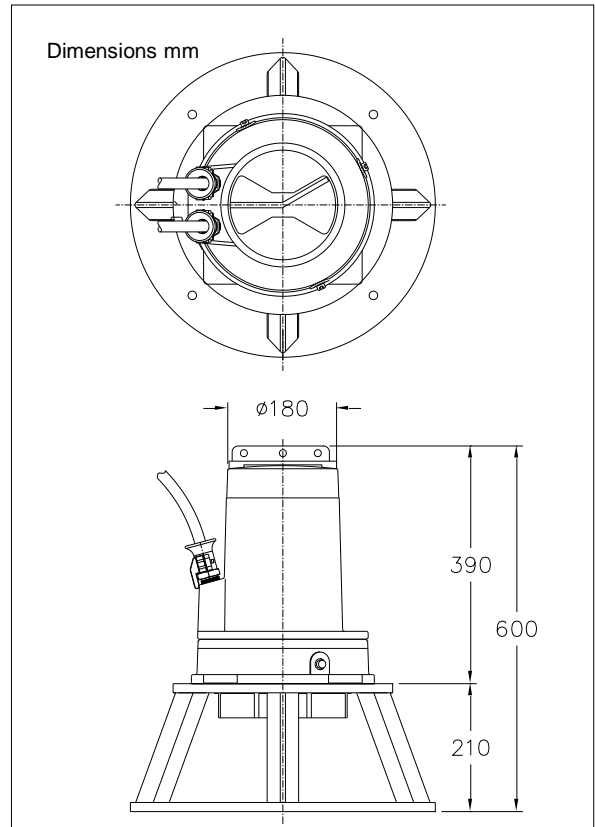


Materials

Impeller S.g cast iron EN-GJS-400-15
 Motor unit parts Cast iron EN-GJL-250
 Pump shaft AISI 431 (X20 CrNi 17 2)
 Alt: AISI 316 (X5 CrNiMo 17 12 2)
 Pump support Galvanized steel
 Alt: RVS 316 (X5 CrNiMo 17 12 2)
 Bolts AISI 316 (X5 CrNiMo 17 12 2)
 Rubber parts Nitrile (NBR) or Neoprene (CR)
 Alt: Viton (FPM)
 Electrical cable Neoprene (CR)
 Seal lubrication Oil
 Seal pump side Silicon carbide – Silicon carbide
 Seal motor side Carbon - Ceramic
 Coating Two component polyurethane

Optional

- Flameproof version, to class: II 2 G Ex d IIB c T4
 Standard: II 2 G Ex b c d IIB T4 Gb
 With Frequency control: II 2 G Ex b c d IIB T3 Gb
- Thermo switches in motor windings
 (standard for flameproof version)
- Cable protection sheet (AISI316)
- Water detector in motor en oil chamber



Connections

voltage	current	electrical cable size		motor protection and/or water detector		flameproof version	
		direct start	star-delta start	direct start	star-delta start	direct start	star-delta start
[V]*	[A]						
208	34.0	4G6	7G2.5	4G6 + 4G1.5	7G2.5 + 4G1.5	4G6 + 4G2.5	7G2.5 + 4G2.5
230	30.7	4G6	7G2.5	4G6 + 4G1.5	7G2.5 + 4G1.5	4G6 + 4G2.5	7G2.5 + 4G2.5
460	15.4	4G2.5	7G1.5	7G1.5	12G1.5	7G1.5	12G1.5
575	12.3	4G2.5	7G1.5	7G1.5	12G1.5	7G1.5	12G1.5
starting current DOL start : 6.1 x rated current							
starting current YD start : 2.0 x rated current						* other voltages on request	

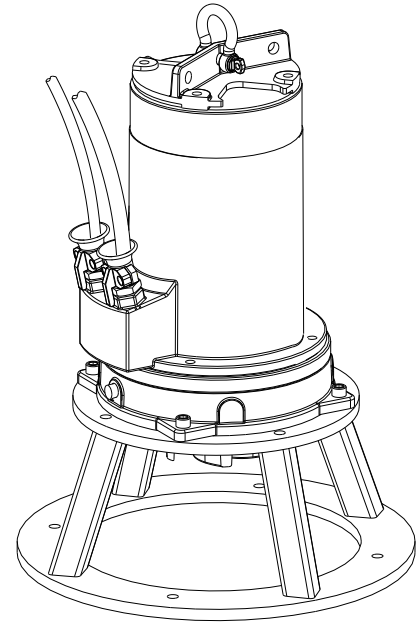
Type: Submersible mixer
 Application: Prevent the accumulation of solids and floating crusts.

Mixer

Effective area up to 18m
 Impeller diameter 155mm
 Electrical power in clean water 15.5 kW
 Weight 102 kg

Motor

Mains: **60Hz** – 3 phase
 Rated shaft power 14.9 kW
 Rated electrical power 17.5 kW
 Nominal speed 1704 rpm
 Motor efficiency 85 %
 Power factor (cos phi) 0.84
 Degree of protection IP 68
 Isolation class F (155°C)
 Max. water temperature 40°C
 Standard cable length 10 m

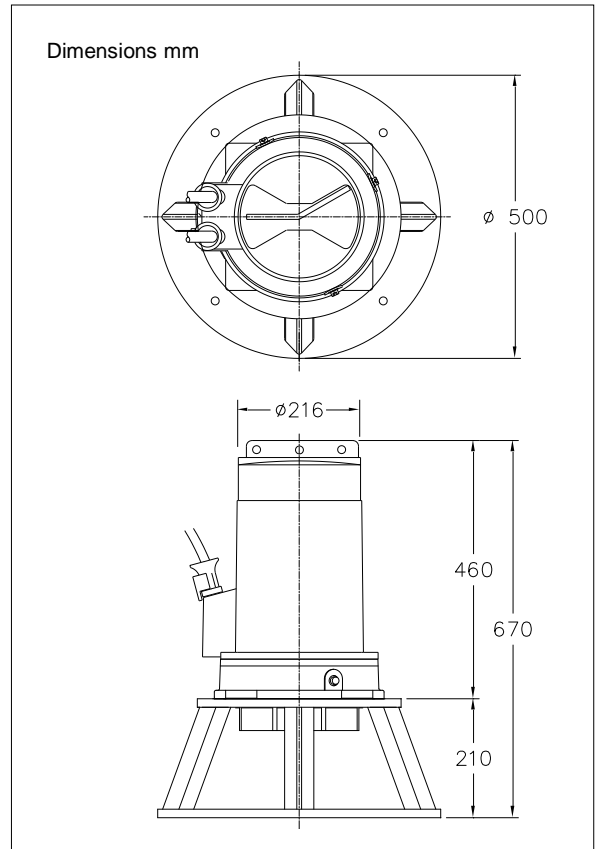


Materials

Impeller S.g cast iron EN-GJS-400-15
 Motor unit parts Cast iron EN-GJL-250
 Pump shaft AISI 431 (X20 CrNi 17 2)
 Alt: AISI 316 (X5 CrNiMo 17 12 2)
 Pump support Galvanized steel
 Alt: RVS 316 (X5 CrNiMo 17 12 2)
 Bolts AISI 316 (X5 CrNiMo 17 12 2)
 Rubber parts Nitrile (NBR) or Neoprene (CR)
 Alt: Viton (FPM)
 Electrical cable Neoprene (CR)
 Seal lubrication Oil
 Seal pump side Silicon carbide – Silicon carbide
 Seal motor side Carbon - Ceramic
 Coating Two component polyurethane

Optional

- Flameproof version, to class: II 2 G Ex d IIB c T4
 Standard: II 2 G Ex b c d IIB T4 Gb
 With Frequency control: II 2 G Ex b c d IIB T3 Gb
- Thermo switches in motor windings (standard for flameproof version)
- Cable protection sheet (AISI316)
- Water detector in motor en oil chamber



Connections

		electrical cable size		motor protection and/or water detector		flameproof version	
voltage	current	direct start	star-delta start	direct start	star-delta start	direct start	star-delta start
[V]*	[A]						
208	58.1	2x 4G6	2x 4G6	-	-	-	-
230	52.6	2x 4G6	2x 4G6	-	-	-	-
460	26.3	4G6	7G2.5	4G6 + 4G1.5	7G2.5 + 4G1.5	4G6 + 4G2.5	7G2.5 + 4G2.5
575	21.0	4G2.5	7G1.5	7G2.5	12G1.5	7G2.5	12G1.5
starting current DOL start : 5.0 x rated current							
starting current YD start : 1.7 x rated current				* other voltages on request			

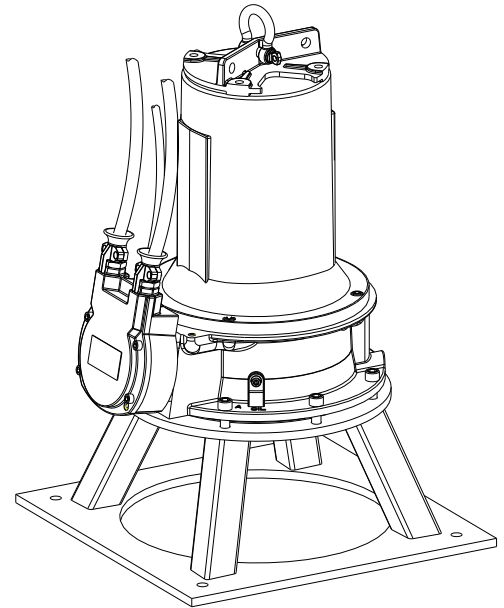
Type: Submersible mixer
 Application: Prevent the accumulation of solids and floating crusts.

Mixer

Effective area up to 20m
 Impeller diameter 176mm
 Electrical power in clean water 27.5 kW
 Weight 200 kg

Motor

Mains: **60Hz** – 3 phase
 Rated shaft power 25.3 kW
 Rated electrical power 30.1 kW
 Nominal speed 1720 rpm
 Motor efficiency 84 %
 Power factor (cos phi) 0.82
 Degree of protection IP 68
 Isolation class F (155°C)
 Max. water temperature 40°C
 Standard cable length 10 m

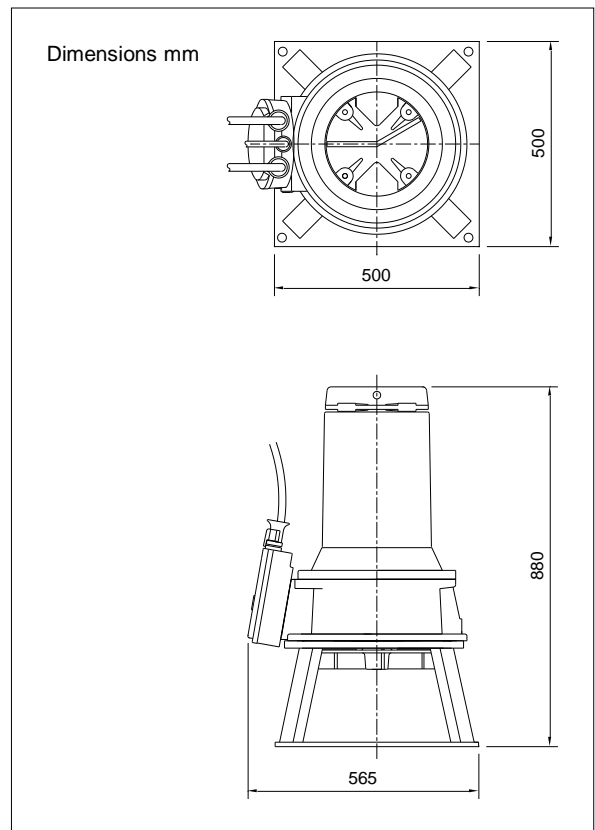


Materials

Impeller S.g cast iron EN-GJS-400-15
 Motor unit parts Cast iron EN-GJL-250
 Pump shaft AISI 431 (X20 CrNi 17 2)
 Alt: AISI 316 (X5 CrNiMo 17 12 2)
 Pump support Galvanized steel
 Alt: RVS 316 (X5 CrNiMo 17 12 2)
 Bolts AISI 316 (X5 CrNiMo 17 12 2)
 Rubber parts Nitrile (NBR) or Neoprene (CR)
 Alt: Viton (FPM)
 Electrical cable Neoprene (CR)
 Seal lubrication Oil
 Seal pump side Silicon carbide – Silicon carbide
 Seal motor side Carbon - ceramic
 Coating Two component polyurethane

Optional

- Flameproof version, to class: II 2 G Ex d IIB c T4
 Standard: II 2 G Ex b c d IIB T4 Gb
 With Frequency control: II 2 G Ex b c d IIB T3 Gb
- Cable protection sheet (AISI316)
- Water detector in motor en oil chamber



Connections

voltage	current	electrical cable size				flameproof version	
		direct start	star-delta start	direct start	star-delta start		
[V]*	[A]						
230	92.2	2x 4G10 + 4G2.5	2x4G16 + 4G2.5	2x 4G10 + 4G2.5	2x4G16 + 4G2.5		
380	55.8	2x 4G10 + 4G2.5	2x4G16 + 4G2.5	2x 4G10 + 4G2.5	2x4G16 + 4G2.5		
460	46.1	4G10 + 4G2.5	2x 4G6 + 4G2.5	4G10 + 4G2.5	2x 4G6 + 4G2.5		
575	36.9	4G10 + 4G2.5	7G2.5 + 4G2.5	4G10 + 4G2.5	7G2.5 + 4G2.5		
starting current DOL start : 5.7 x rated current							
starting current YD start : 1.9 x rated current						* other voltages on request	